



NATURE RESERVE IN ÖREBRO COUNTY

Råmossen and Svarttjärnsskogen



Lomtjärnen. Photo: Ingrid Andrén



Photo: Thomas Karlsson

Undisturbed marshland and old forest that has not been cut for over a century makes the Råmossen and Svarttjärnsskogen nature reserve a real wilderness. Here, forest birds breed, such as capercaillie, Tengmalm's owl and the three-toed woodpecker. In the spring, the black grouse engage in courting rituals on the peat bog.

Much of the forest in the nature reserve is over 130 years old. The terrain is wild in places, with large stone blocks, which is one of the reasons why the area has been spared by modern forestry. In the undisturbed forest, many rare lichens, mosses and fungi thrive.

Many of the reserve's unusual lichens require high and constant air humidity, so are strongly associated with undisturbed forest. The most eye-catching lichen is perhaps *Alectoria sarmentosa* – a large, yellow-white hanging lichen on the branches of spruce trees. Tree lungwort, *Parmeliella triptophylla* and *Platismatia norvegica* are other exciting elements found in the lichen flora. *Platismatia norvegica* is the Värmland county lichen. It has a restricted, westerly distribution and is extremely dependent on high air humidity.

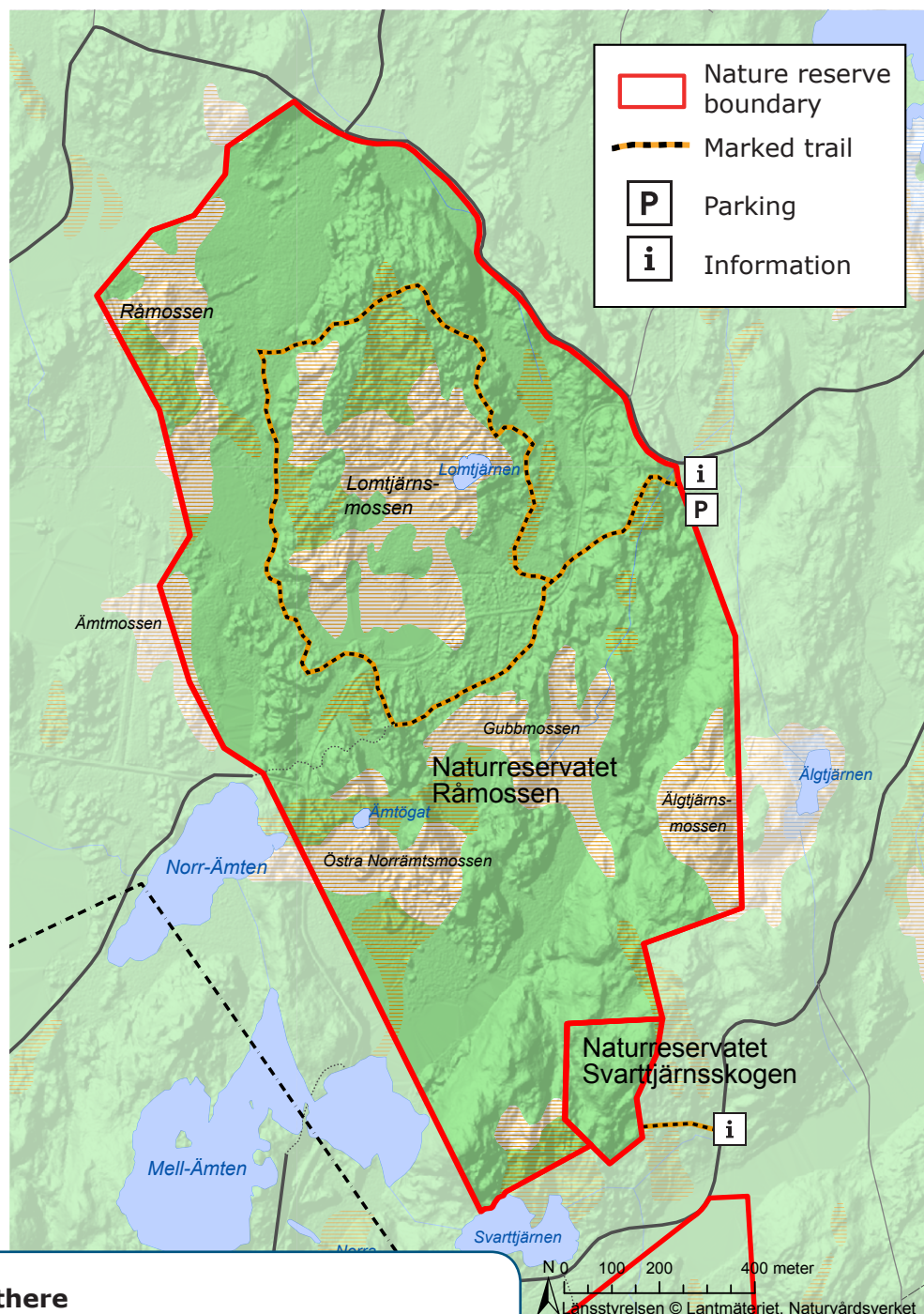
The marshes are covered with low scrub vegetation such as bog bilberry, Labrador tea and dwarf birch. Delicate pines grow over on virtually all of Lomtjärnsmossen. Cranberry and cloudberry, as

well as the small lesser twayblade orchid, also grow in the carpet of white mosses. The surrounding forest also contains another small beautiful orchid, creeping lady's tresses, which thrives in deep moss in old pine forest.

Birdlife is also rich and varied. Black woodpecker, greater-spotted woodpecker and the three-toed woodpecker all breed in the area. There are many black grouse and the capercaillie displays many examples of its courting ritual. The area is perhaps at its best on early mornings in spring when the black grouse's cooing sounds of courting can be heard over the marsh and the dawn chorus of other birds is at its most intense, but the nature reserve has something to offer during all seasons.

In many places there are traces of charcoal making in the form of charcoal kiln remains. These formed the bases of charcoal stacks and can be identified as circular elevations in the ground. Often the vegetation differs from the surrounding vegetation and the soil is dark coloured due to the charcoal remains.





How to get there

Take the E18 motorway from Örebro towards Karlskoga. Turn off at the campsite in Villingsberg. Drive past the campsite and continue southwards.

Råmossen: Approximately 1.2 km south of the campsite, turn right. After just under 1 km turn left into the car park at the eastern limit of the nature reserve. A path leads round the northern half of the nature reserve.

Svarttjärnsskogen: 3.4 km south of the campsite, there is a small information board on the right. Follow the forest road into the nature reserve. There are no paths in the nature reserve.

Facts about the reserves

Established: Svarttjärnsskogen: forest reserve 1953 and nature reserve 1996; Råmossen: 2007 and 2009

Area: Råmossen: 179 ha, Svarttjärnsskogen: 4 ha

Landowner: Swedish Environmental Protection

Agency (Råmossen) and Sveaskog AB (Svarttjärnsskogen)

Managed by: County Administrative Board

Established by: County Administrative Board (Länsstyrelsen)

§ In the Råmossen nature reserve, you are not permitted to:

- remove or damage dead trees or parts of trees
- light fires

In the Svarttjärnsskogen nature reserve, you are not permitted to:

- damage ground or vegetation, such as by digging up or picking flowers, lichens or wood-decay fungi
- damage dry wood and dead trees on the ground by carving, hacking or removing loose bark
- disturb animal life
- camp or start fires
- drive motor vehicles
- collect insects and other small creatures
- mark trails with paper strips or similar