



# Fishing Rules and Permits - Gällivare Municipality 2026

## Welcome to the highlands of Norrbotten County!

The mountain region in Norrbotten County is vast and situated above the so called 'cultivation limit'.

In total, the region covers almost 55 000 km<sup>2</sup> – an area slightly larger than Denmark! Many different types of habitats can be found in the area, e.g. high-altitude landscapes with glaciers, wind-swept tundra, extensive wetlands, and birch forests with a surprisingly rich flora. In Norrbotten County, you will also find the highest mountain in Sweden, Kebnekaise, and the deepest lake, Hornavan, along with the last remnants of continuous and pristine, coniferous forests in the country.

Many of the largest national parks in Sweden belong to Norrbotten County. This is also where you will find Lapponia; the UNESCO World Heritage Site, preserved for its high environmental and cultural values. Extensive areas are encompassed by Lapponia, and it is utilized by nine different Sámi villages. Within the boundaries of the world heritage site, you will also find four national parks and two nature reserves.

## Recreational fishing in the highlands of Norrbotten County

The mountain region in Norrbotten County encompasses more than 20 000 lakes. It is also crossed by many streams and rivers of different characters that together cover thousands of kilometers.

The region has much to offer all types of recreational anglers. There are excellent opportunities to enjoy spin fishing, fly fishing, ice fishing, and trolling etc.

Most anglers target arctic char, brown trout, and grayling, but in some highland locations it is even possible to catch salmon. At lower altitudes, perch, pike, and whitefish present further challenges, and offer great opportunities for sport fishermen.

Most rivers that flow into the Baltic Sea have been exploited for hydroelectricity, but in Norrbotten County large and free-flowing rivers still remain. In fact, this is the only place in Sweden where salmon migrate and spawn in mountainous regions.

## Recreational fishing in Gällivare Municipality

In the upper parts of the Kaitum River, and its associated lakes, there are excellent opportunities to catch grayling, trout, arctic char, and whitefish. Downstream it is also possible to catch salmon.

Gällivare Municipality has much to offer, e.g. the Kaitum River and its renowned fishing camp Tjuonajokk.

Another place in Gällivare Municipality, known for regular encounters with big grayling, is Tuvvajaure.

Many lakes with strong populations of arctic char are situated in the western parts. Even hydroelectric power dams, such as the Suorva reservoir, have become popular and easily accessible fishing destinations.

Gällivare Municipality currently holds the Swedish national record for inland trout. The record specimen weighed 17 kilograms.

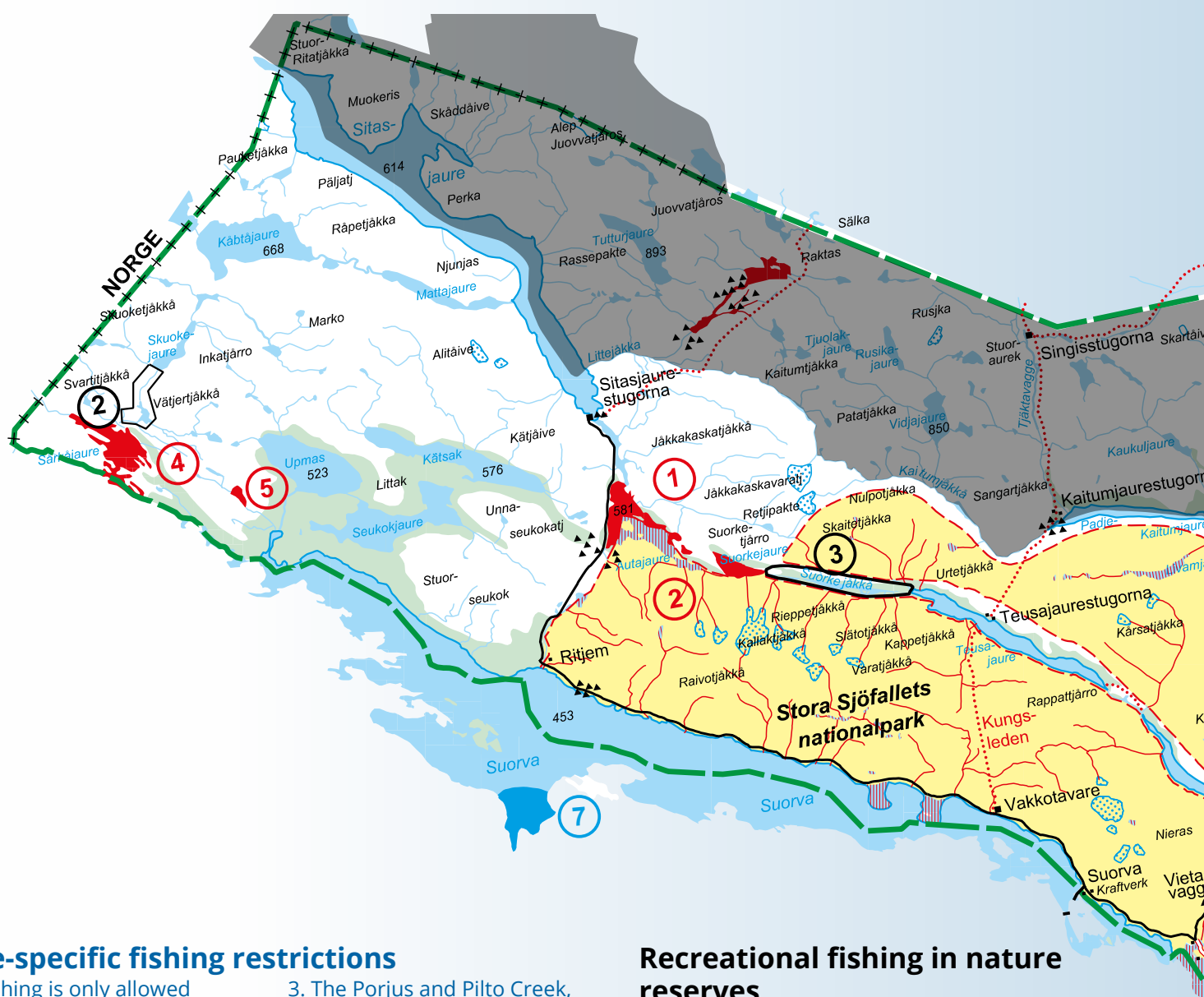
*"Gällivare Municipality currently holds the Swedish national record for inland trout. The record specimen weighed 17 kilograms."*



Länstyrelsen  
Norrbotten







## Site-specific fishing restrictions

1. Fishing is only allowed from the southern shore of the Taivek Rapids, i.e. Taivekströmmarna. Special fishing permit required. Information and special fishing permits are provided by Tjuonajokk Fishing Camp, free of charge
2. The Tuvva Lakes, i.e. Tuvvasjöarna. Bag-limit: 2 graylings per angler and day, but only 1 grayling is allowed to exceed 0.45 m.
3. The Porjus and Pilto Creek, i.e. Porjus- and Piltobäcken. Live baits are allowed. No size limits.
4. Saltoluokta to Pielnenjarka. Fishing is not allowed from boats.
5. Aluokta. Fishing is not allowed from boats.
6. Boat engines must be turned off during fishing.
7. Boat engines must be turned off during fishing.

## Fishing forbidden

1. Autajaure to Suorkejaure.
2. Stora Sjöfallet National Park.
3. Sjaunja Nature Reserve. Observe that fishing is allowed in the Tuvva Lakes, i.e. Tuvvasjöarna, and in the Sjaunja River, i.e. Sjaunjaälven, from Riteljaure.
4. Sårkåjaure
5. Kalajaure.

## Recreational fishing in nature reserves

Many streams, rivers, and lakes belong to nature reserves in Norrbotten County. In Sweden, nature reserves are open to the public, and recreational fishing is often allowed, but not at the expense of viable fish populations and their habitats. To learn more about nature protection in Norrbotten County, please visit our website: [www.lansstyrelsen.se/norrboten](http://www.lansstyrelsen.se/norrboten)

Tourist Information Centres will also be able to provide brochures with extensive information.

## Limited number of fishing permits available

The County Administrative Board of Norrbotten will sometimes administer special permits to allow limited fishing in restricted areas. This year there are three such areas in Gällivare Municipality:

1. The Kaitum River from Lieteksavo to the confluence with Tertojäkkå. Fishing is only allowed from the southern shore.
2. Svartijäkkå from Skuokejaure to Sårkåjaure.
3. Suorkejäkkå between Suorkejaure and Teusajaure.

To apply for a permit please contact the County Administrative Board of Norrbotten before March 30.

Address: Länsstyrelsen i Norrbottens län, SE-971 86 Luleå, Sweden

+46 (0) 10 225 50 00

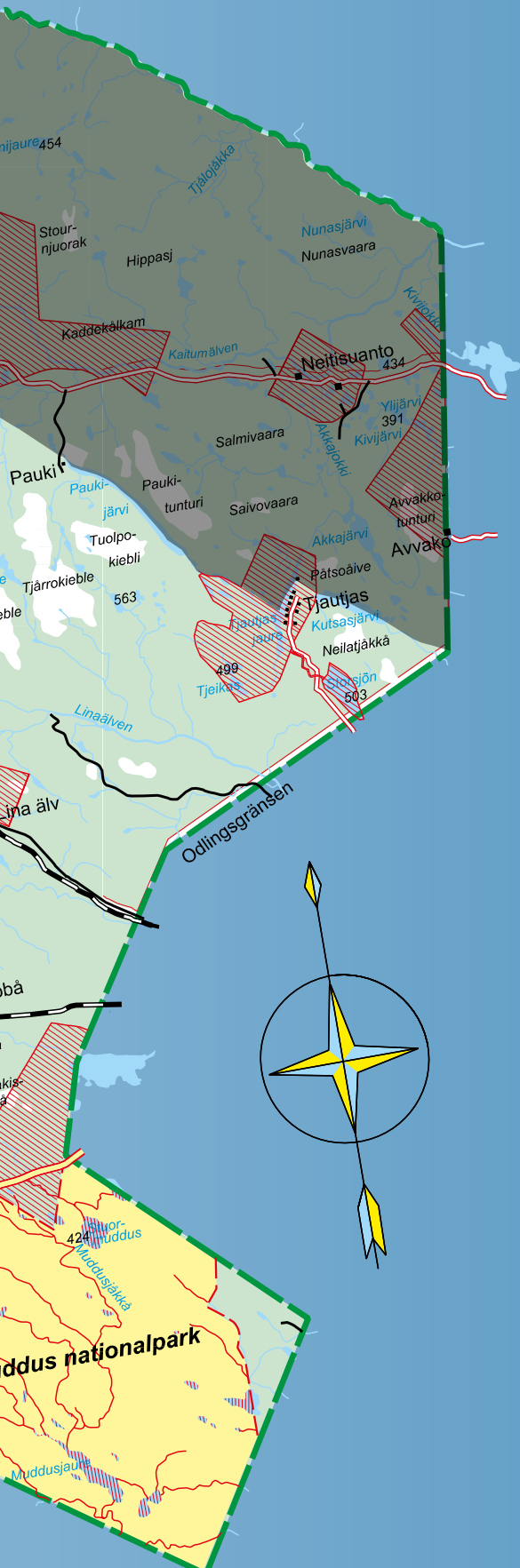
[norrboten@lansstyrelsen.se](mailto:norrboten@lansstyrelsen.se)

[www.lansstyrelsen.se/norrboten](http://www.lansstyrelsen.se/norrboten)



# FISHING MAP

Gällivare municipality above  
the cultivation limit  
Fishing rules 2026



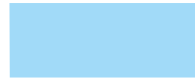
## Map legend



Girjas Sami Village - Permits administered by the County Administrative Board are not valid.



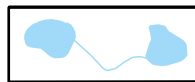
Recreational fishing allowed all year.



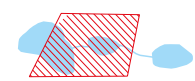
Recreational fishing allowed during two time periods: Jan 1-May 2 and Jun 1-Dec 31.



Site-specific fishing restrictions (see supplementary info next to map).



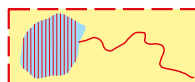
Limited number of fishing permits available (see supplementary info next to map).



Private property – Permits administered by the County Administrative Board are not valid. Local permits are sometimes sold by the owners



Fishing forbidden.

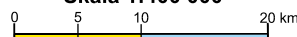


National park/Nature reserve – fishing forbidden.



Trotting allowed. Number of fishing rods per person: max. 3. Number of baits/lures per fishing rod: max. 1. Number of fishing rods per boat: max. 6. Bag limit: 3 salmonids (grayling, trout or arctic char) per angler and day. Trotting with downriggers, planer boards, side planers, diving planes, and paravanes is only allowed in Stora Lulevatten. In Stora Lulevatten, you are only allowed to kill and keep trout if their adipose fin has been removed.

Skala 1:400 000



1 cm = 4 km