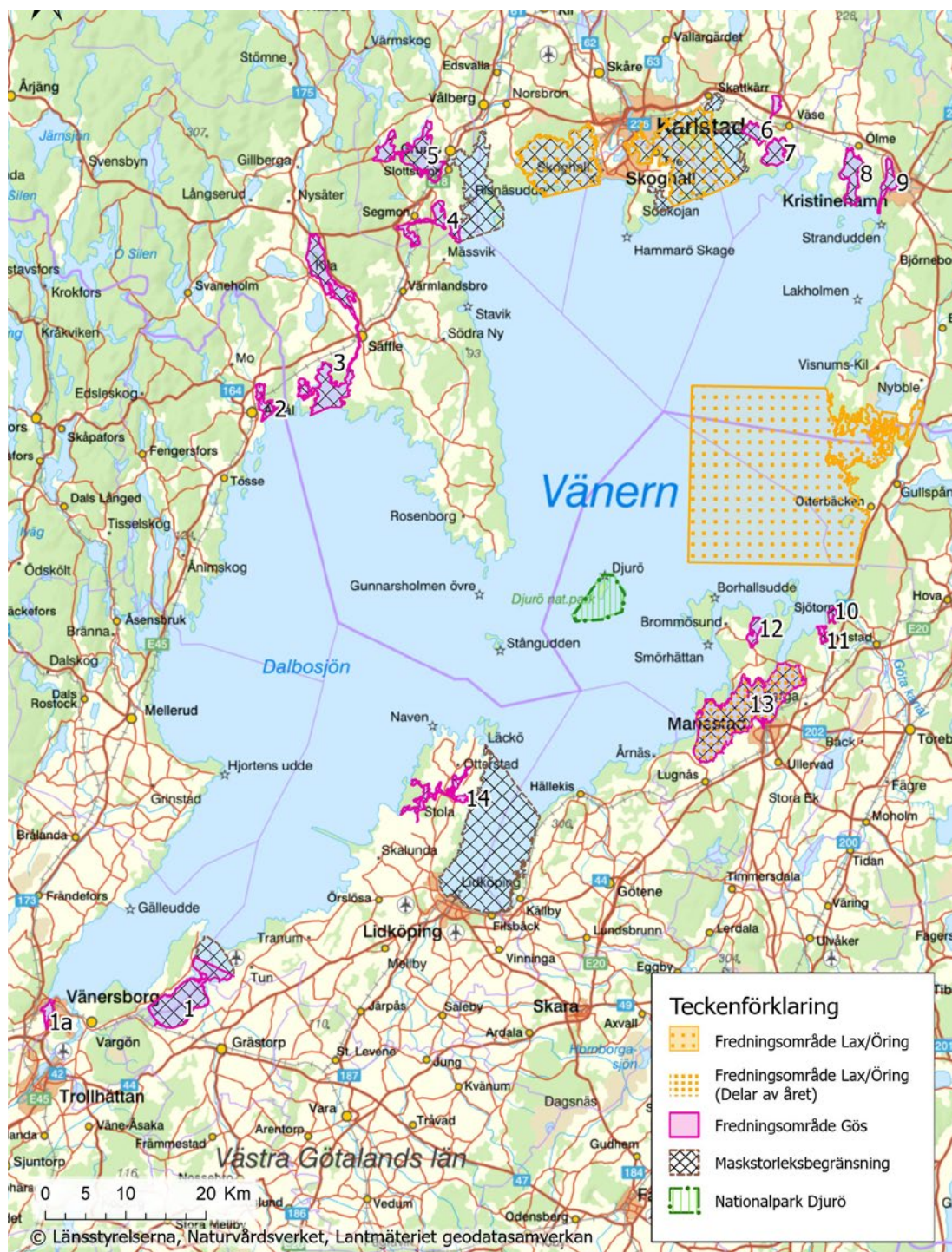




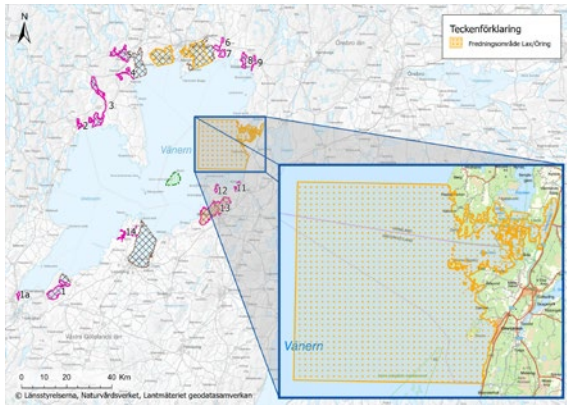
Protected areas in Lake Vänern

July 2025



This information material has been produced to visualize where there are special restrictions in addition to the general fishing regulations in Lake Vänern. In the case of legal application, only the original printed version of the legislation shall apply. Each fisherman is obliged to find out for himself what regulations apply in the area in which fishing is carried out.

Foreign citizens are allowed to fish with handheld fishing gear on both private and public waters to the same extent as Swedish citizens.



Protection area Gullspång River

- Fishing for salmon and trout is prohibited throughout the year.
- Trolling is prohibited.

Gullspång river's protection area includes all water within straight lines between the following points:

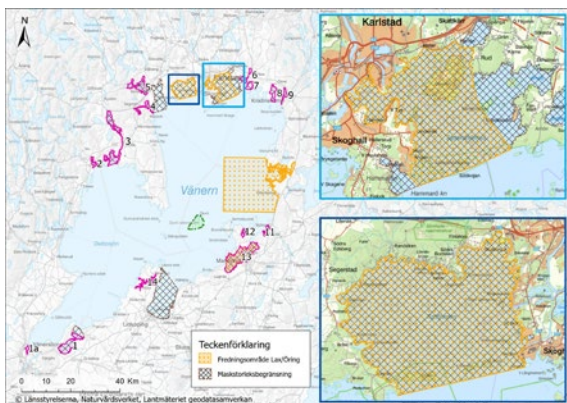
SE: 58°53,52 N, 14°00,72 O

SW: 58°53,52 N, 13°38,97 O

NW: 59°05,36 N, 13°38,97 O

NE: 59°05,36 N, 13°56,40 O (Kils udde).

The area is bounded from the inner part of Kilsviken by a line from the eastern tip of the Baltic Island (59°03.82 N, 14°03.94 E) to the cape due west of Lövetorp (59°03.71 N, 14°05.75 E).

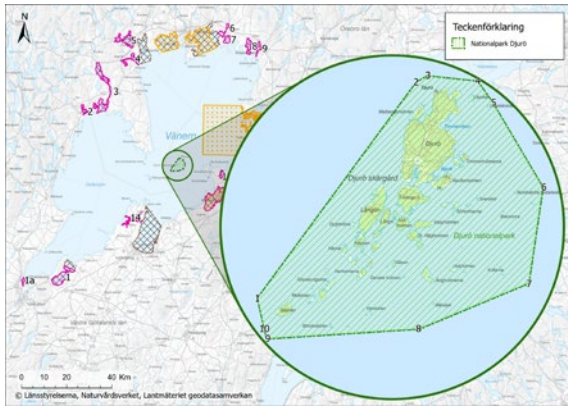


Klarälven River's eastern and western protection area

- Fishing for salmon and trout is prohibited from 20 May to 15 September.
- Trolling fishing is prohibited during the prohibition period.

Klarälven's western protection area is bounded by a line from Lindränkan's southern cape to Garpen's southern cape.

The eastern protection area of river Klarälven is bounded by lines from the southernmost point on the Hammarö side of the Långholm Sound in position 59 17.90 N, 13 35.30 E, to a point in position 59 17.40 N, 13 36.20 O, further across Måns Bengtskär, Arnön's southwestern cape, Kärrholmen's western cape and St. Karholmen's southern tip to Rudslandet (Storudden's southern tip) and from Rudslandet (Nordudden) due west to Herrön's southern cape. Sättersviken is not included in the conservation area.

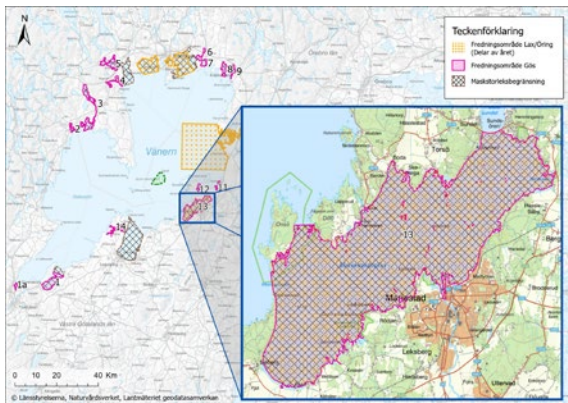


Protection area Djurö National Park

→ Trolling is prohibited in the National Park.

Djurö National Park includes all water within straight lines between the following 11 points:

No.	Degrees and decimal minutes DDM (WGS84)	No.	Degrees and decimal minutes DDM (WGS84)	Punkt	WGS84, DDM (Grader och minuter)
1	N 58°49,487' E 013°24,509'	5	N 58°52,532' E 013°29,290'	9	N 58°49,552' E 013°28,070'
2	N 58°49,876' E 013°24,319'	6	N 58°52,275' E 013°29,659'	10	N 58°49,392' E 013°24,555'
3	N 58°52,503' E 013°27,871'	7	N 58°51,279' E 013°30,857'	11	N 58°49,487' E 013°24,509'
4	N 58°52,581' E 013°28,124'	8	N 58°50,128' E 013°30,579'		



River Tidån's Protection area

→ Fishing for salmon and trout is prohibited during the prohibition period from 15 August to 31 October.

→ Fishing for pike-perch is prohibited from 25 April to 25 May in this area.

→ Trolling is prohibited during the prohibition period.

Tidån River's protection area corresponds geographically with pikeperch protection area no. 13.

Tidån River's protection area consists of Mariestadsfjärden, limited by the Torsö bridge and a line from Viknäsudde over the southern tip of Store Mårren to Skutebacken and from there straight east to Dillö.



Pike-perch protection areas

→ Fishing for pike-perch is prohibited from 25 April to 25 May in pink areas.

→ If a pike-perch is accidentally caught, it must be released immediately.

→ Trolling fishing is prohibited during the prohibition period.

Pink areas (also numbered) are pike-perch protection areas:

1. Brandsfjorden-Dättern. Bounded by a line from Fallsö to Karaby church.
- 1a. Vassbotten. Bounded by Dalbobron and Residensbron.
2. Åmålsviken, with Norra viken Bounded by a line from Näsudden to the southern tip of Kisholmen and from there the shortest route to the mainland.
3. Byälven estuary area. Bounded by lines from Ö: a Källsudden's southern tip to Galtens lighthouse and from there due east to the mainland. The area also includes Harefjorden south of the bridge for E 18 and the intermediate part of Byälven.
4. Ekholmssjön-Kyrkebysjön. Bounded by a line from L. Träludden over Orreholmen and Knipan to Skorven and from there due north to the mainland.
5. Borgvikssjön-Grumsfjorden. Bounded by the railway bridge over Slottsbroundet.
6. Arnöfjorden-Panken. Bounded by a line from the southern tip of Silkestaholmen over the northern tip of Yttre Sällaren to the northern tip of Arnön.
7. Bothnian Bay. Bounded by a line from Bollskär to Sandnäsudden.
8. Ölmeviken. Bounded by a line from Görans udde to Svartebergsudden.
9. Varnumsviken. Bounded by a line from Hjälmars näs due east to the mainland.
10. Sjötorpsviken. Bounded by a line from Harnäs Cape to the southern tip of Lilla Gåsskär and from there due east to the mainland.
11. Börstorpsviken. Bounded by a line from the northern tip of Hornnäs holmen to the northern tip of Surö Bokskog.
12. Fågelö viken. Bounded by a line from Torsnäs Cape and from there due west to Fågelö.
13. Mariestadsfjärden. Bounded by Torsöbron and a line from Viknäsudde over the southern tip of Store Märren to Skutebacken and from there due east to Dillö.
14. Ullersundet-Fröfjorden-Vänsjösjön-Kävelstocken. Bounded by a line from Käringudden to the southern tip of Galteryggen and from there due south to the mainland, as well as by lines from Örens stång to the northwestern tip of Spårön and from the southern tip of Spårön to Ekedalen.

Lake Vänern's rules in brief

For more detailed fishing legislation see *Fiskelag 1993:787, Förordning (1994:1716) om fisket, vattenbruket och fiskerinäringen* and *Fiske i sötvattensområdena (FIFS 2004:37)*

- A maximum of three salmon or trout may be caught and kept per fisherman per day.
- Catching salmon and trout in Lake Vänern and adjacent watercourses that are not marked by having their adipose fins cut off is prohibited throughout the year. Anyone who catches such fish, whose fins have not been cut off, must immediately release it into the water.
- A maximum of ten baits may be used per boat when trolling.
- Fish for which a minimum size has been prescribed may not be landed in a cut state.
- Fish of the species listed below may only be caught if they meet the following minimum dimensions, calculated from the tip of the snout to the tip of the tail fin.
 1. Salmon 60 cm
 2. Trout 60 cm
 3. Pikeperch 45 cm
- It is prohibited to fish for eel.
- Fishing is prohibited with lights, hook, explosives, stupefying or killing substances, electric current or firearms (also applies to harpoon guns).
- It is prohibited to fish with hook gear with the intention of hooking or yanking the hook or hooks externally on the fish.
- Fish of a certain species that:
 1. are caught when fishing for the species is prohibited,
 2. are caught with gear or methods that are not permitted for the species, or
 3. do not meet the prescribed regulations regarding the size of fish must be immediately released into the water, whether alive or dead.
- Fishing for asp is prohibited from 1 April to 31 May in all of Lake Vänern's tributaries.

Never catch more fish than you and your family can eat. Immediately kill any fish you catch that you want to keep. Carefully release any fish you cannot or do not want to keep and do not handle them with dry hands, as this will damage the fish's mucus layer. If possible, avoid lifting the fish out of the water if you are going to release it, as this is highly stressful and can cause unnecessary mortality.

Show respect for nature. Always leave the fishing spot in the condition you want to find it! Follow the specified regulations, otherwise the fish stocks may be harmed.

If you catch a tagged fish over the minimum size, send the tag and catch details (length, weight, gear, date, location, name) to SLU – Sötvattenslaboratoriet, 178 93 Drottningholm, or go to their website slu.se and fill in your details. You will receive compensation for postage and information about the fish. Tagged fish under the applicable minimum size must always be returned to the lake.

Fishing legislation is subject to continuous change. The information in this publication is current at the time of printing. When applying the law, only the original printed edition of the legislation applies. Every person who fishes is obliged to find out for themselves what regulations apply in the area where fishing is conducted.