



LÄNSSTYRELSEN
VÄSTRA GÖTALANDS LÄN

Fishing regulation in the sea

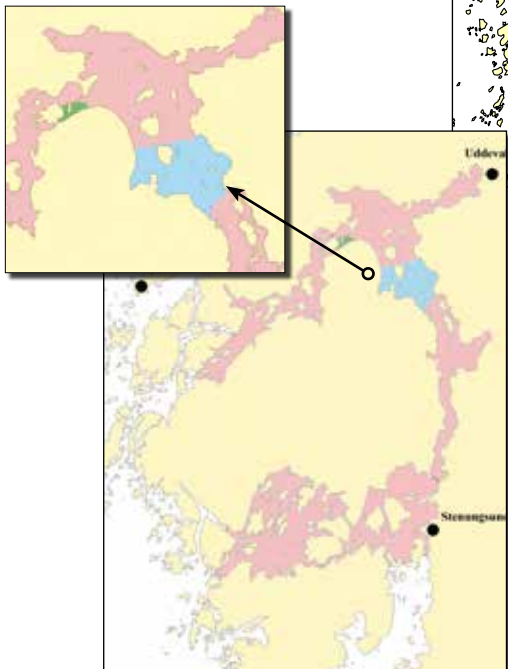
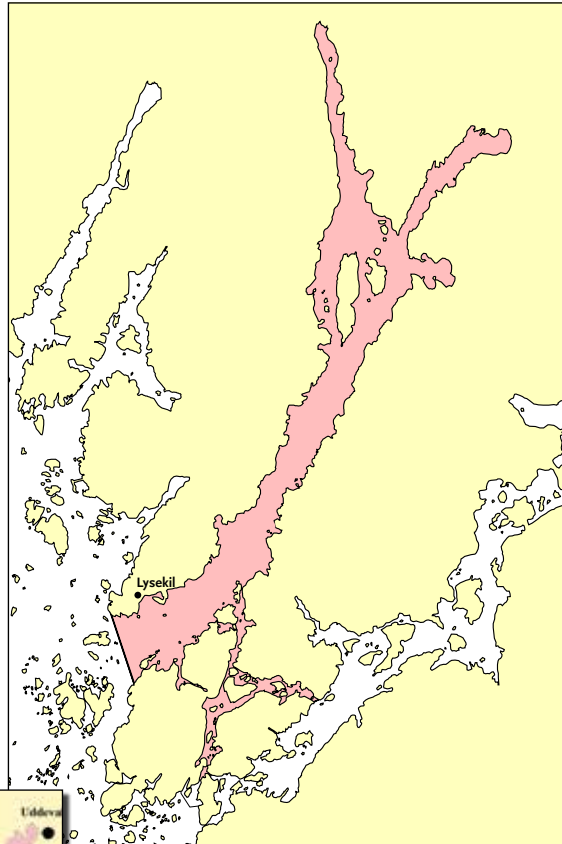
In the county of Västra Götaland

▼ Protection areas, eight fjords

Red area: fishing for cod, haddock and pollack is illegal year round. Permitted gear is manual gear and

Blue area: Fishing for cod, haddock and pollack is illegal year round. From 1 April through 30 September, fishing for other species is permitted only from Orust and the mainland with manual gear. Only fishing from land is permitted.

Green area: All fishing is illegal year round.



▲ Red area

Fishing for cod, haddock and pollack is illegal year round. Fishing for other species is permitted with manual gear.

We hope that your fishing trip will be both pleasant and exciting. Below are some of the regulations that apply when you go sea fishing in Västra Götaland County. The purpose of the regulations is to protect and secure the fish and shellfish population. Keep in mind that special regulations apply to fishing in Svinesund and Idefjorden (see FIFS 2004:36). Fishing regulations are always changing. The information in this brochure is up to date at the time of printing.

Boundary between the offshore and freshwater area

Göta River is bound by a line from the northernmost point of Älvsån at Västerberget over Knippelholmen's lighthouse to the western jetty of Arendal's marina at Hisingen. The northern part of the river is bound by a line from the westernmost point of Kalhed Näsa at Hisingen to the westernmost point of Klubbenäs on the mainland.

Other watercourses that run to the coast are bound by a straight line between the two outermost estuary points in each watercourse.

Manual gear

Manual gear refers to rods, jigs and similar mobile gear equipped with a line and up to ten hooks.

Mobile gear

All other types of gear, such as nets and cages.

Minimum length

For hauls with manual gear, minimum lengths apply only to salmon, salmon trout and cod.

Fish are to be measured from the tip of the snout to the outermost point.

Species	Minimum length
Salmon	45 cm
Salmon trout	45 cm
Cod	30 cm

Hauls that are shorter than the minimum length must be returned to the sea immediately.

Who is allowed to fish?

Swedish citizens may fish with mobile fishing gear off the Västra Götaland coast. Swedish citizens in this connection include foreign citizens who are living permanently in Sweden. Other foreign citizens may fish with manual gear only. Fishing in lakes and watercourses is permitted only after obtaining permission from the game tenant. Such permission can be obtained by purchasing a fishing licence permit or by other means.

Relationship between fishermen

The person who arrives at the fishing site first has priority if it is not possible for more than one person to fish at the same time. As long as a person uses authorised fishing gear, nobody else can stop him. It is illegal to occupy a fishing site unnecessarily.

Illegal fishing gear and methods

Fishing is illegal with fishspears, gaffs, explosives, stunning or lethal substances, electrical current or firearms, including spear guns. However, it is legal to take in a fish that has already been caught by using a gaff. It is illegal to fish with hook gear with the intention of snagging or snatching the hook or hooks on the outside of the fish. Fishermen may not use hook gear that is especially designed for snagging or snatching.



Protected species

It is illegal to fish for sabrefish, sea lamprey, small-spotted catshark, basking shark, Porbeagle, blue skate, Thornback ray, Allis shad, Twaite shad, spiny dogfish, blue-finned tuna or eel.

Protection periods

Fishing for salmon and salmon trout is illegal within the offshore area from 1 October through 31 March and outside of the offshore area year round. From 1 January through 31 March, fishing for cod, pollock and haddock is illegal inside the trawl boundary. The prohibition applies both to manual and mobile gear. It is illegal to fish for halibut from 20 December through 31 March.

Violation of fishing regulations

Violation of the regulations is subject to public prosecution and is punishable by fine or imprisonment. Fishing gear can be confiscated and forfeited. The coast guard, police and fishing supervisor monitor compliance with the regulations. If you observe a violation of the regulations, contact one of the authorities below.

Advice if you are a fisherman

Never take in more fish than you and your family can eat. Immediately kill any fish that you have caught and plan to keep. Carefully release any fish that you cannot or do not want to keep and do not handle it with dry hands – that

can damage the fish's mucus layer. Show respect for nature. Always leave the fishing site in the shape that you would like to find it in. It is up to us to pass on the privilege of fishing in a living environment to future generations. Don't forget your responsibility. Follow the above regulations – otherwise the fish population can be damaged.

Within the protection area for sea trout

Fishing is illegal from 1 October through 31 March in these areas. From 1 April to 30 September, certain other gear – such as manual gear that is not towed by a boat – is permitted. Fishing with ice fishing tackle or a similar method is illegal. Maps over these areas can be retrieved on www.lansstyrelsen.se/vastragotaland

Bag limit on the sport fishing of sea trout and salmon

When fishing with hand-held equipment at Skagerrak and Kattegat, with the exception of Svinesund and Idefjorden, a daily maximum limit of two fish per angler may be kept from the total catch of salmon and trout.